

 **HotDoc** | CPD WEBINAR

PART 1 | Cybersecurity: Password Management in your Practice




HOSTED BY
Henry McLaughlin



 **apm**
Australian Association of
Practice Management
AAPM Approved
2022
5 Points

WED 20 JULY

12:30pm AEST



In the spirit of reconciliation, HotDoc acknowledges the Traditional Custodians of country throughout Australia and their connections to land, sea and community.

We pay our respect to their elders past and present and extend that respect to all Aboriginal and Torres Strait Islander peoples today.



Healthcare ICT Specialists



www.greenumbrella.com.au

Improving Technology in General Practice

2022 Cybersecurity
Education



Cyber Security, Password Management



What is a Password?

- A password is a **secure** combination of characters used to access protected information
- Passwords are generally used in combination with a username
- To gain access you need both your username & password



What is a good Password?

- Avoids common words and character combinations
- Cannot be guessed
- Minimum 8 characters
- Mixture of character types
- Has not been used before



25 Most Common Passwords

123456

password

123456789

12345678

12345

11111

1234567

qwerty

iloveyou

princess

admin

welcome

666666

abc123

football

123123

monkey

654321

!@\$%^&*

charlie

aa123456

donald

password1

qwerty123

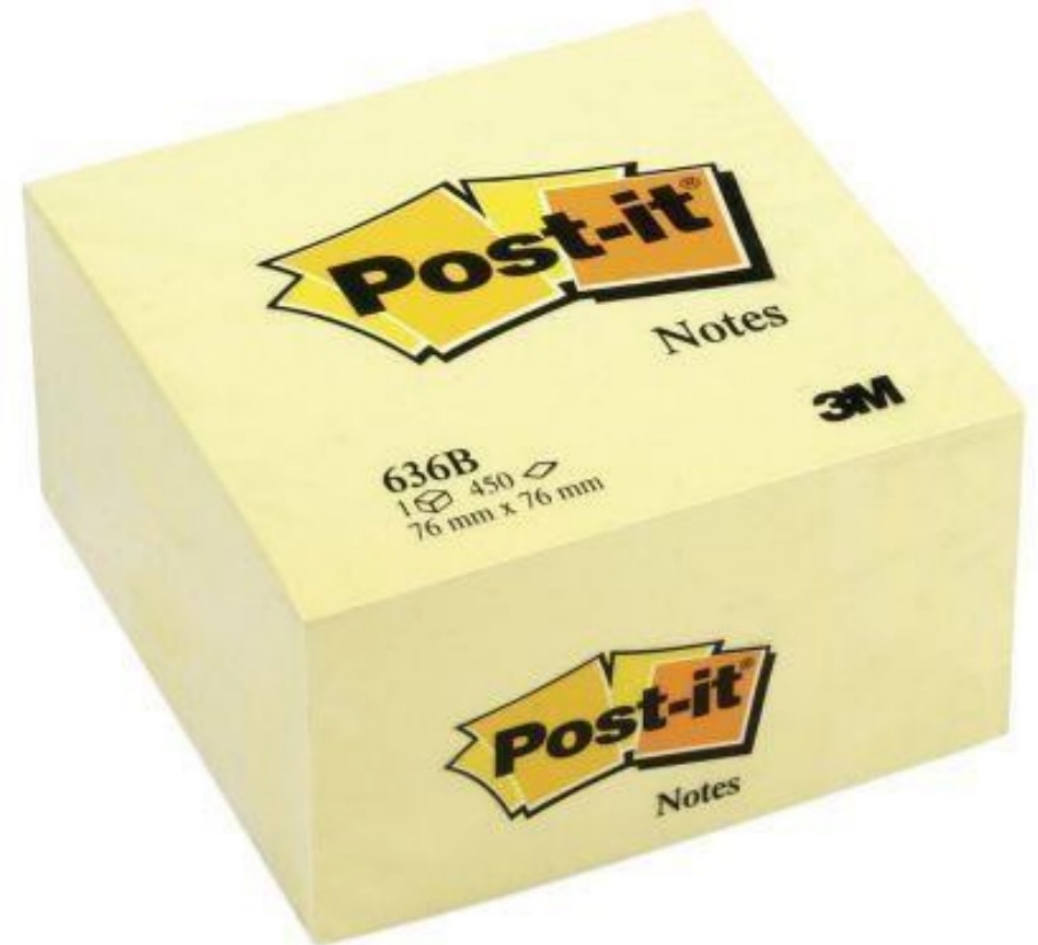
The problem is **simple**



- **Generating good passwords**
- **Storing passwords**
- **Recalling passwords**

- Zf9xHB-Y-VKAiuNA
- aIDQPrqGG_1_Ehlf
- 6_-K-apdVe9-g1k1
- VMc7OIZ78rh-GcRI
- NAb6S-WoqxQ9TAIh
- yd_5EF9Xm-4yv5pA

No
No
No



Have You Been Breached?



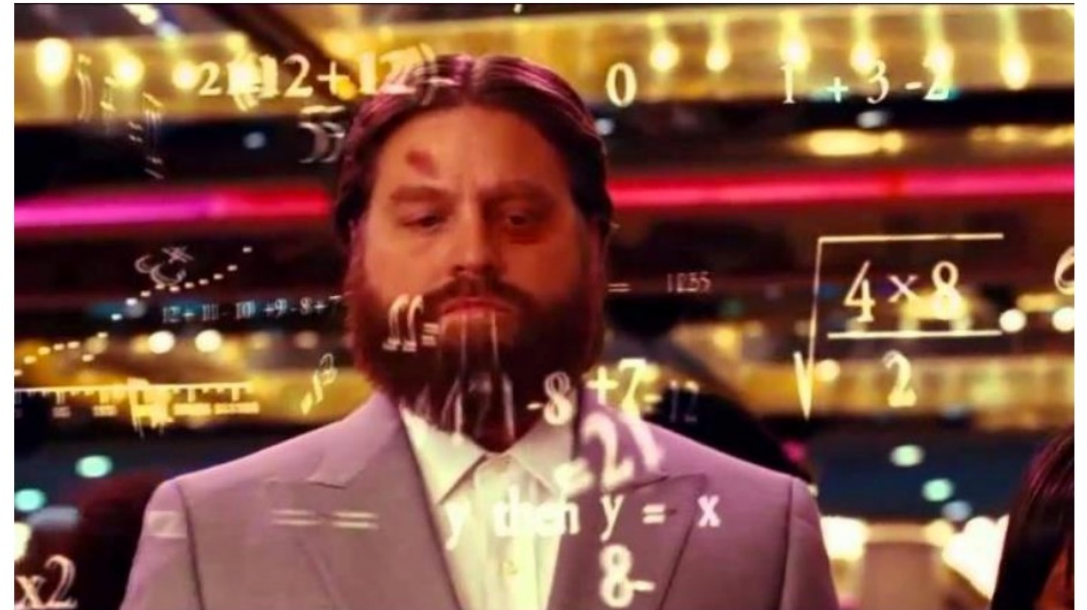
- Imagine all your keys were the same
- Imagine all your keys were labelled with your home address
- Imagine you lost one of your keys



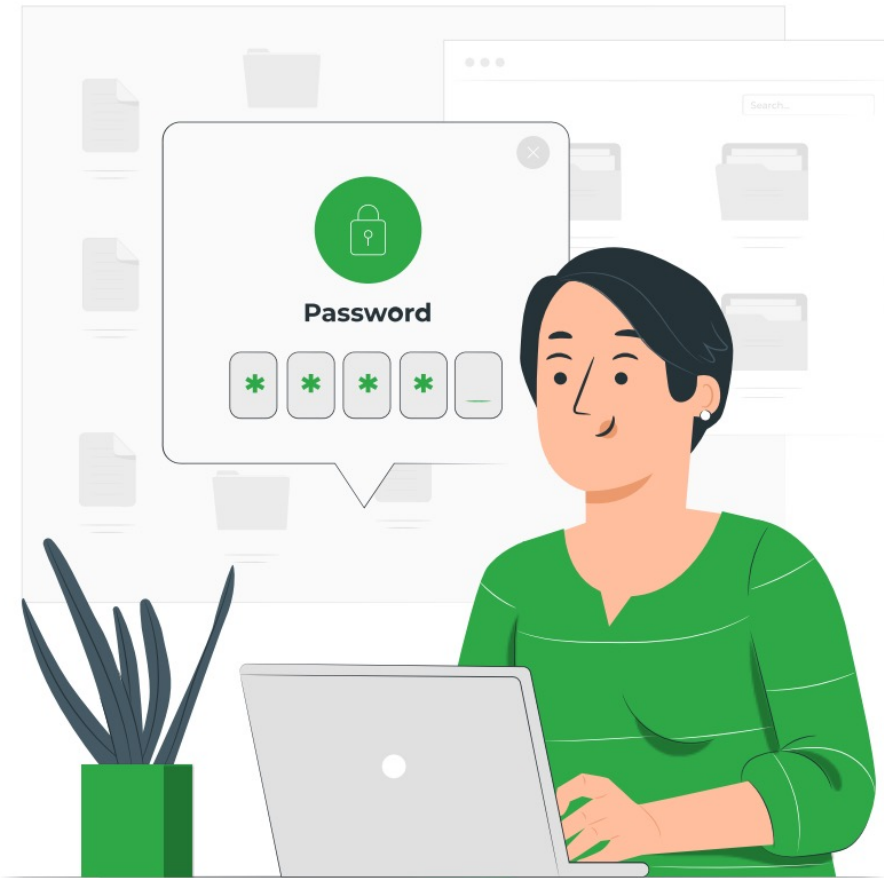
haveibeenpwned.com

Use a Password Manager

- A password manager is a digital vault for passwords
- A password manager can create and store strong passwords for you.
- They work across your desktop and phone.



Password Managers



- Password management is easy with the right tools
- Multiple password managers available:
- Green Umbrella Technology uses **MyGlue** internally.

LastPass

 KEEPER

1Password

 Sticky
Password

 DASHLANE

 PASSWORD
BOSS

 RoboForm
FOR BUSINESS

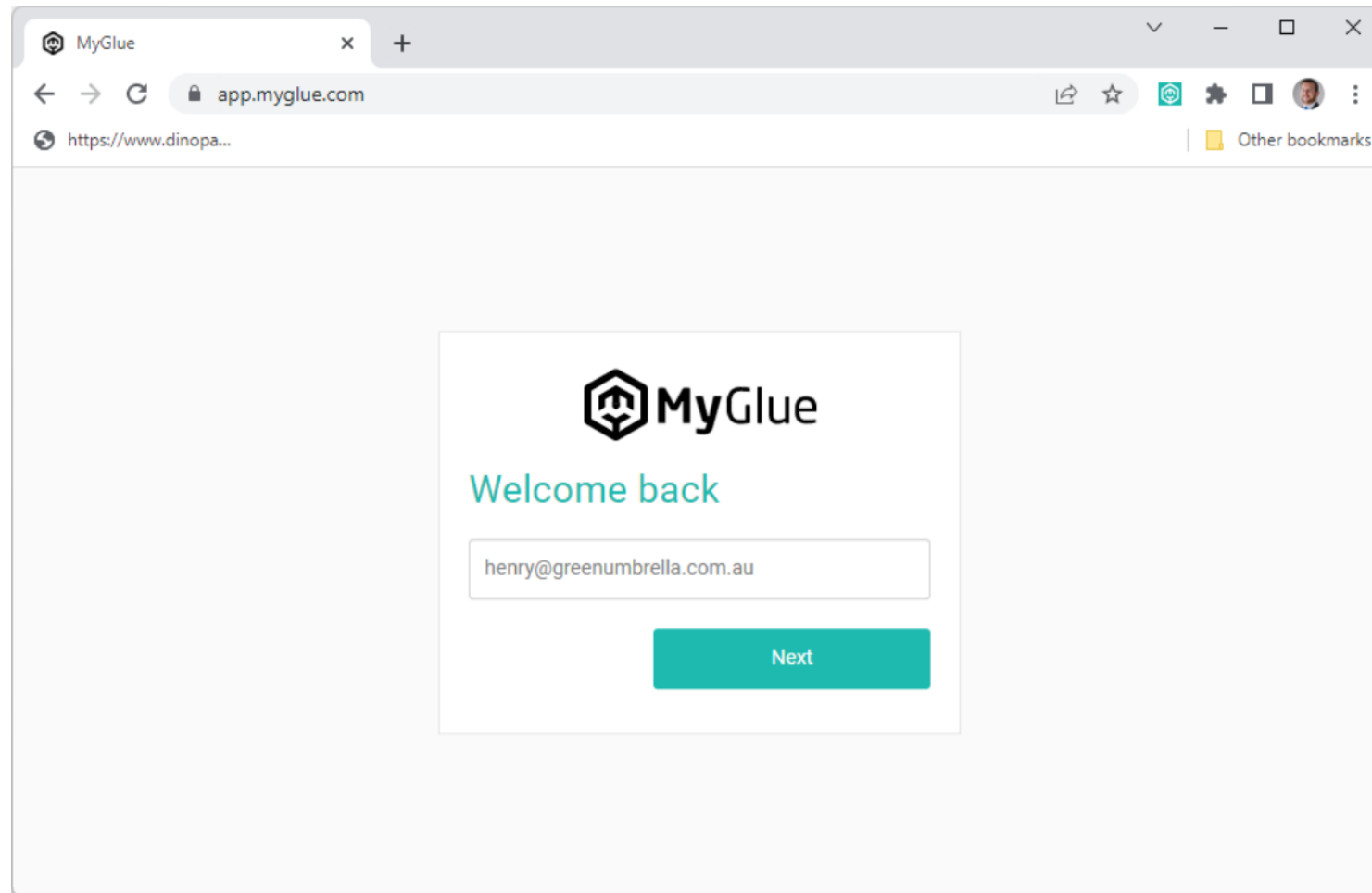
 NordPass

One Password to rule them all

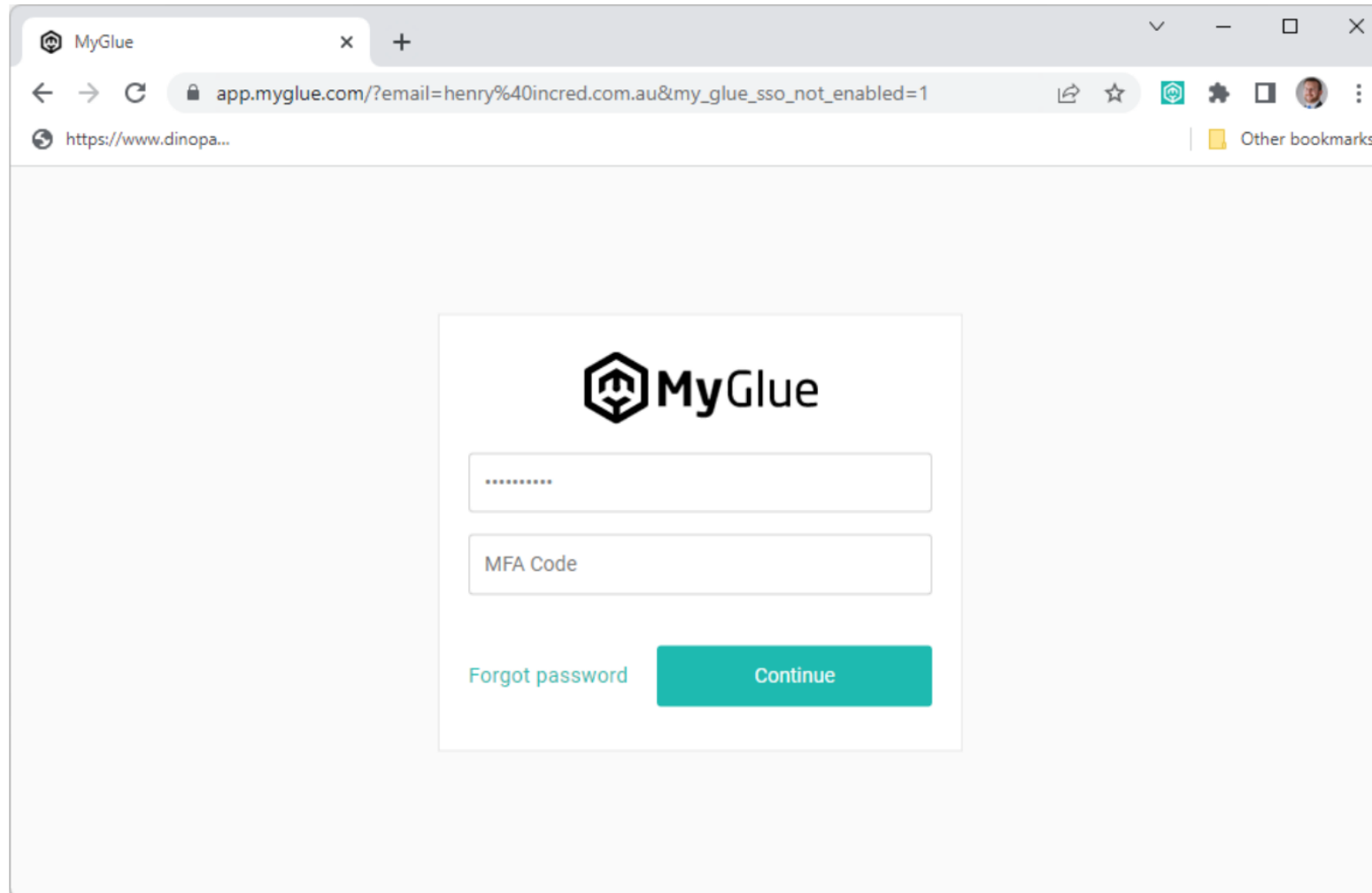
- Password managers use a master password
- Only the master password needs to be remembered
- When used with 2FA your passwords are secure
- Once unlocked your passwords are available



Login example



Login example



The screenshot shows a web browser window with the MyGlue login page. The browser's address bar displays the URL `app.myglue.com/?email=henry%40incred.com.au&my_glue_sso_not_enabled=1`. The page content includes the MyGlue logo at the top, followed by a password input field (masked with dots), an MFA Code input field, a "Forgot password" link, and a teal "Continue" button.

MyGlue

.....

MFA Code

[Forgot password](#) [Continue](#)

Usage example

A screenshot of a web browser displaying the MyGlue dashboard. The browser's address bar shows "app.myglue.com". The dashboard header includes the Green Umbrella Technology logo, navigation tabs for "Dashboard", "Organizations", and "Personal", a search bar, and user profile icons. The main content area is titled "Dashboard" and features a "Favorites" section with a "GU" icon for "Green Umbrella Technology". A "Popular This Week" widget shows "Green Umbrella Technology" with 4 passwords created and 3 updated in the last 7 days. A "Recently Viewed By You" section lists "HotDoc" and "NetBank". A "Support" button is located in the bottom right corner. The footer contains copyright information for ITG Software Inc. and links to Privacy Policy and Terms of Service.

Dashboard — MyGlue

app.myglue.com

https://www.dinopa...

GREEN UMBRELLA TECHNOLOGY

Dashboard Organizations Personal

Search

HM

Dashboard

☆ Favorites

GU

Green Umb...

Popular This Week

GU

Green Umbrella Technology

4 Passwords created

3 Passwords updated

In the last 7 days

Recently Viewed By You

HotDoc

NetBank

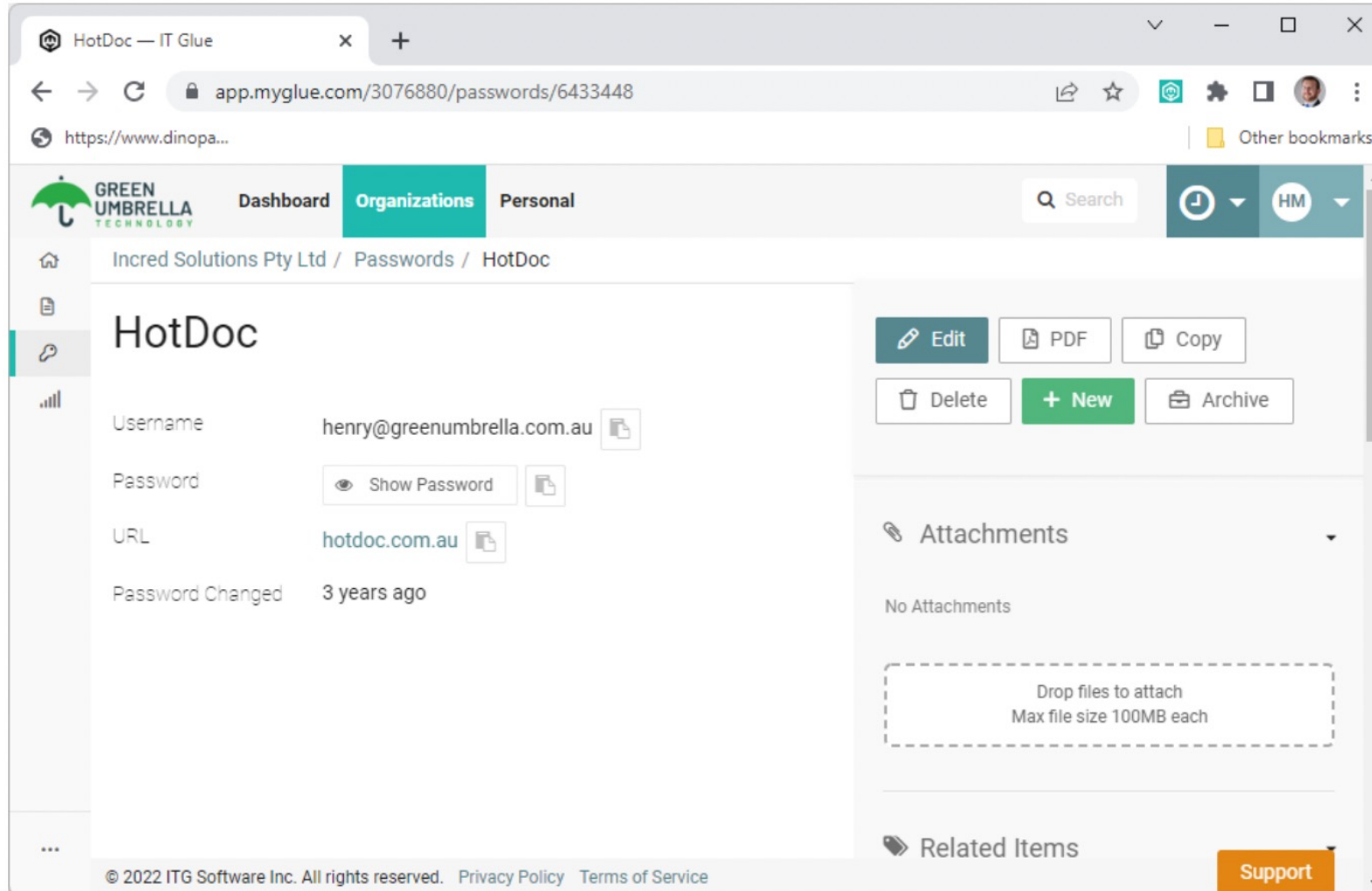
Support

© 2022 ITG Software Inc. All rights reserved. Privacy Policy Terms of Service

Creating a new Password

A screenshot of a web browser showing the 'Create Password' page in the MyGlue application. The browser's address bar shows the URL 'app.myglue.com/3076880/passwords/new?folderId='. The page header includes the Green Umbrella Technology logo, navigation tabs for 'Dashboard', 'Organizations', and 'Personal', a search bar, and user profile information. The main content area is titled 'Create Password' and contains several input fields: 'Name *' with the value 'HotDoc', 'Category' with a dropdown menu showing 'Cloud', 'Username' with the value 'henry@greenumbrella.com.au', and 'Password *' which is currently masked with dots. To the right of the form is a 'Security' section with a shield icon and a dropdown arrow, containing text that explains that security settings are automatically determined by account defaults and parent asset security. At the bottom of the page, there is a copyright notice for ITG Software Inc. and a 'Support' button.

Usage example



HotDoc — IT Glue

app.myglue.com/3076880/passwords/6433448

GREEN UMBRELLA TECHNOLOGY Dashboard Organizations Personal Search HM

Incred Solutions Pty Ltd / Passwords / HotDoc

HotDoc

Username henry@greenumbrella.com.au

Password Show Password

URL hotdoc.com.au

Password Changed 3 years ago

Edit PDF Copy

Delete + New Archive

Attachments

No Attachments

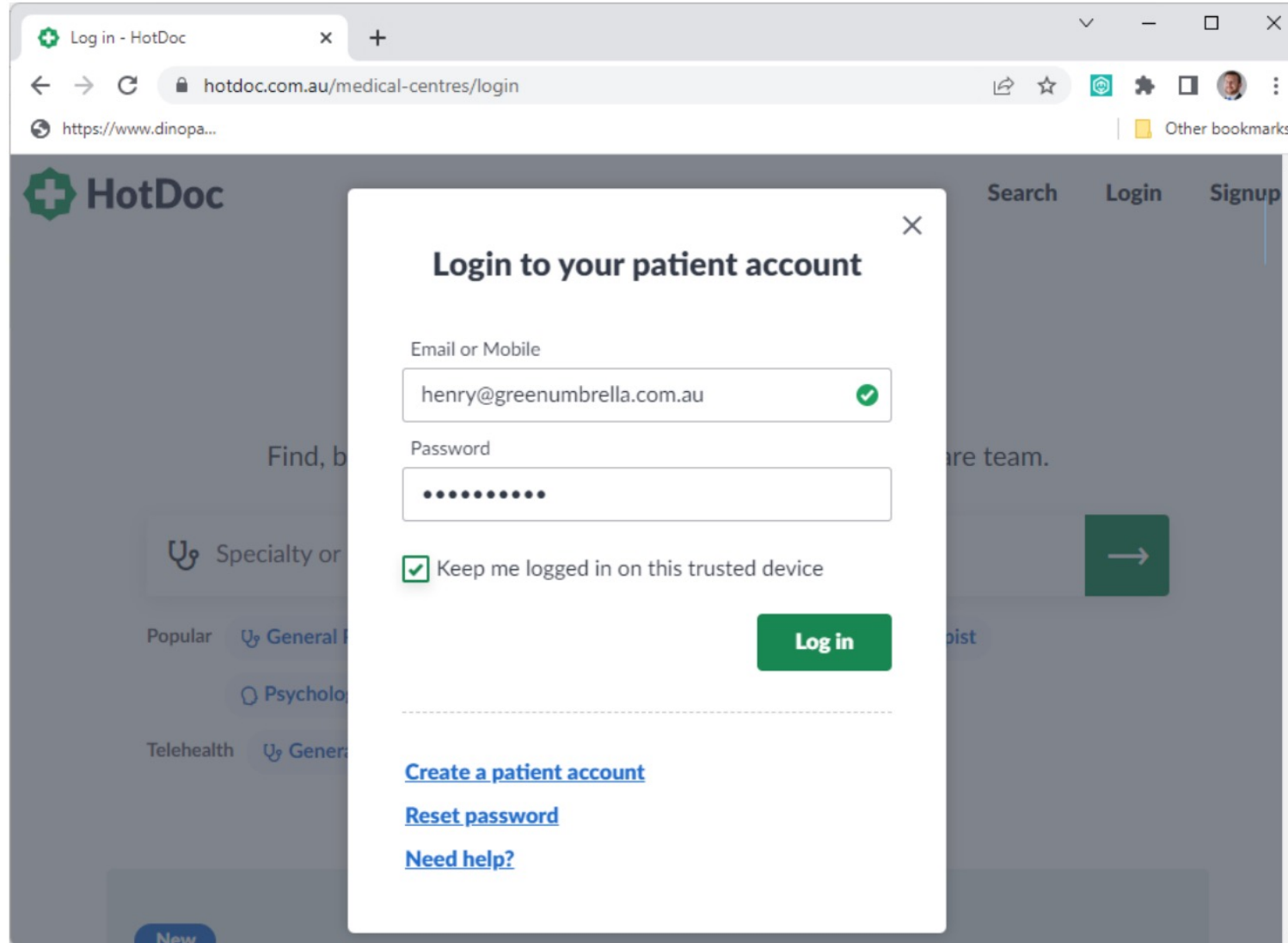
Drop files to attach
Max file size 100MB each

Related Items

Support

© 2022 ITG Software Inc. All rights reserved. Privacy Policy Terms of Service

Usage example



Log in - HotDoc

hotdoc.com.au/medical-centres/login

https://www.dinopa...

HotDoc

Search Login Signup

Login to your patient account

Email or Mobile

henry@greenumbrella.com.au ✓

Password

.....

Keep me logged in on this trusted device

Log in

[Create a patient account](#)

[Reset password](#)

[Need help?](#)

 **HotDoc** | CPD WEBINAR

PART 2 | Cybersecurity: Password Management in your Practice



HOSTED BY
Henry McLaughlin



clapm

Australian Association of
Practice Management

AAPM Approved
2022

5 Points

WED 3 AUG

12:30pm AEST



Thank You!



www.greenumbrella.com.au